



ATLAS
SYSTEMS, INC.
*Promoting Library Excellence
Through Efficiency*



What's New in Aeon 2.1

Based on feedback from our growing Aeon user community, we have incorporated many new and enhanced features in Aeon 2.1. For further details, see the release notes and documentation updates in our online Aeon Documentation, available from:

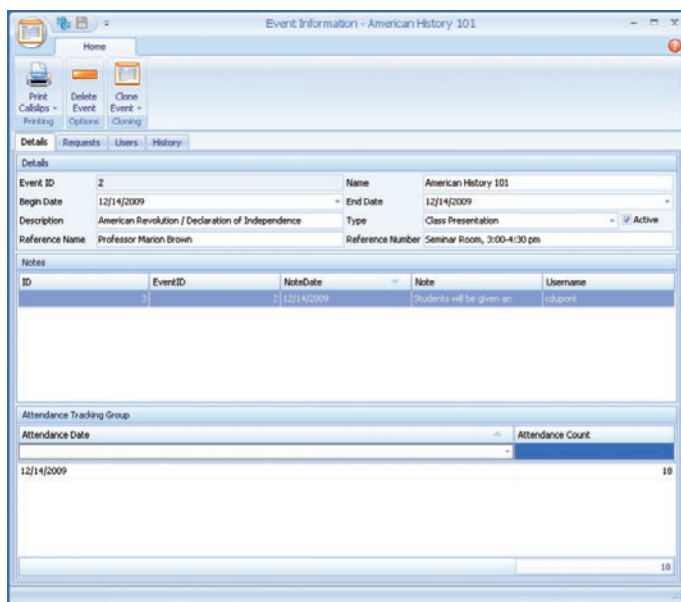
www.atlas-sys.com/products/aeon/resources.html

Patron Request Cloning

With Aeon 2.1, patrons now have the ability to clone any request from the Aeon patron web interface. For example, they can open a finished request and use the “clone” option to request the item again. Likewise, they can use a current request for one box of archival documents as the basis for requesting another box from the same collection. This new cloning feature can also be configured to facilitate the requesting of photocopies or digital images from items that have been previously requested for reading room use.

Events

Sites that repeat instructional presentations and tours will really appreciate the new events cloning feature that allows staff to create – with a single click – a new event instance based on the event information and associated requests from an existing event. Staff can then edit the new event to modify any event information or add or remove any associated transactions. What’s more, we’ve also added an attendance tracking function to the Event Information screen so that staff can use Aeon to track and tally the number of participants who attended an instructional presentation or tour, or to record the number of visitors who viewed an exhibition by day, by week or other desired interval.



The Events Information screen now includes cloning and attendance tracking options.

Appointment Scheduling

A separate “when needed” field has been added to all web request forms to allow patrons to specify the date they plan to visit and view materials. Sites have the option to automatically route requests made more than a specified number of days in advance to an “awaiting future request processing” status, after which they will be automatically re-routed to the default “new request” status once the current date moves within the specified day range. This new feature is designed to facilitate the scheduling of patrons visits and, if desired, the retrieval of materials in advance of their arrival.



The automated Awaiting Future Request Processing status facilitates scheduling patron visits.

EAD Requesting

We have made several improvements to the Aeon XSLT stylesheet to enable sites to more quickly and easily control the display of their EAD finding aids through Aeon. The HTML checkboxes patrons use to place requests directly from finding aid displays can be set to appear at the item or container levels.

Changes to the Aeon web server now make it easier for sites to incorporate Aeon-linked HTML

checkboxes in native displays of their finding aids, even before prompting patrons to log into their Aeon accounts to complete the submission of their requests. We have also made it possible to add the “request for” proxy user and events dropdown menu and “keep in review” checkbox option to EAD request forms, just like other request forms.



Enhancements to the Aeon XSLT stylesheet make it easy to configure EAD finding aid displays for box or item-level requesting.

Security Enhancements

A “date of birth” field has been added to the User Information table so that sites can record patron birthdates in addition to or in lieu of other personal identification data. In addition, any changes made to any User Information fields are permanently recorded and viewable as part of the patron’s User History. We have also added a feature to enable staff to import digital photos of patrons for display in their user records or the production of patron ID cards.

Printing

Aeon 2.1 includes a new printer setup control that allows staff to specify different printing devices for individual form templates. With this new feature, staff can automatically route the production of callslips, patron ID cards, and other forms to specialty printers, if desired.

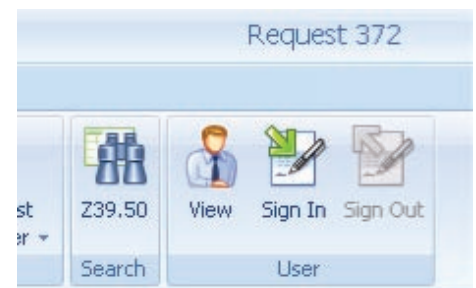
Custom Batch Processing

With Aeon 2.1, sites can now define customized batch processes to optimize their workflows. In the Aeon Customization Manager, a new batch process can be defined by selecting one or more standard or custom statuses and then choosing the status to which selected records should be changed when the custom process is applied. The new process will appear as an option on the batch process button tab on the Aeon client home screen. This powerful feature can be used, for example, to create a series of customized custom processing steps to facilitate the retrieval and return of batches of materials stored at off-site locations.

Client Workflow Conveniences

We have added several convenience features to the Aeon staff client interface. Now you can:

- View request listings from a separate tab in patron and event information screens
- Close processing tabs individually
- Display a pop-up alert in the system tray when patrons have finished registering and are ready to be cleared
- Sign patrons in or out of your reading room directly from Request Information screens, without having to bring up the patron’s User record
- Retrieve transaction records by entering item barcodes, bibliographical system or EAD file identifiers directly into the transactions search box on the client home screen, without having to bring up the custom search form.



Visitor log sign-in and sign-out buttons have been added to the Request Information screen.

Statistics

For quicker access to statistics, all status and custom search grids now display a tally of matching record rows.



For more information contact
Christian Dupont at cdupont@atlas-sys.com
or 757-467-7872 ext. 215

244 Clearfield Avenue • Suite 407 • Virginia Beach, VA 23462 • www.atlas-sys.com

Promoting Library Excellence Through Efficiency